



深圳市井智高科机器人有限公司
Shenzhen Wellwit Robotics Co.,Ltd.



Under Drive Lifting Robot W1000SL

INS + LiDAR SLAM Navigation + 1000KG loading

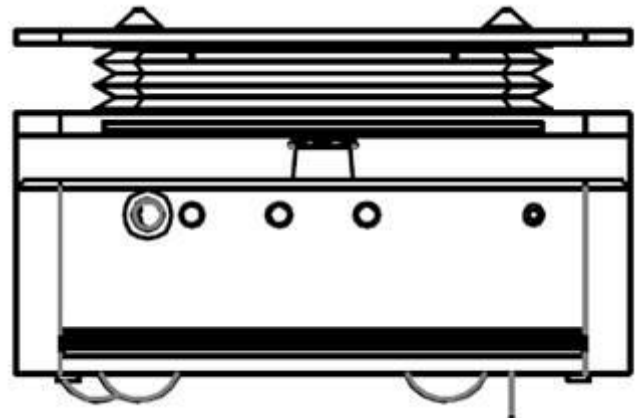
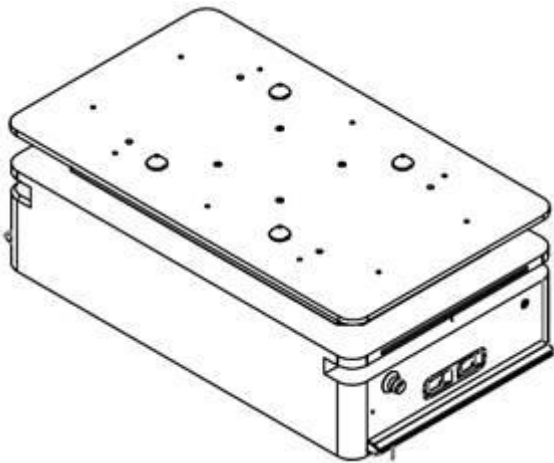
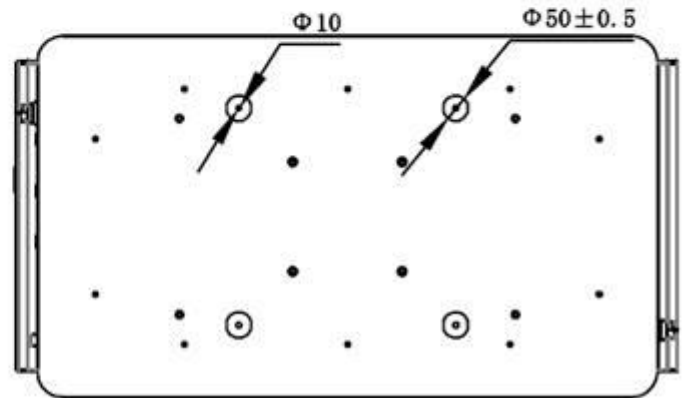
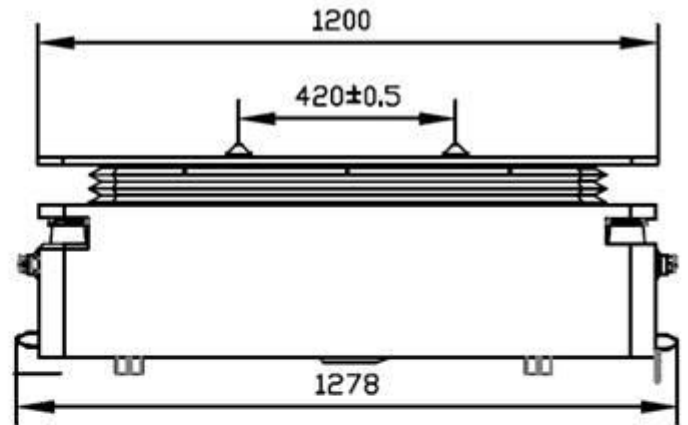
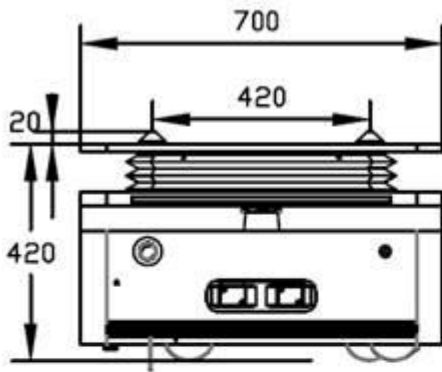


Product features

1. W1000SL latent Lifting AGV is a LiDAR SLAM navigation and moving robot independently developed by Wellwit Robotics.
2. Product support flexible customization: meet the customer's function expansion according to the customer's request, make the product operation more flexible and better meet the needs of customers.
3. Equipped with LiDAR SLAM + inertial navigation, easy deployment, flexible route and flexible obstacle avoidance.
4. The carrying capacity is 1000kg, and most of the goods can be handled and transported by lifting and rotating.
5. The product runs stably and efficiently with a max unloading running speed of 1.7m/s
6. Intelligent power management: preset multi-level power threshold, and charge autonomously below the threshold.
7. The maximum battery capacity of the product can meet 40ah, and the battery configuration and design with large capacity can improve the endurance of the product.
8. The product is based on inertial navigation, equipped with LiDAR SLAM navigation, and the navigation accuracy can reach $\pm 10\text{mm}$.
9. Cluster scheduling, in the robot control system, you can view the working status, electricity, location and other information of all robots at the same time.
Dispatch and manage all equipment through the system.
10. Equipped with LiDAR to avoid obstacles, front contact anti-collision strip, left and right emergency stop buttons to protect equipment and goods safety.



Dimensional





Specification

	Name	Latent lifting AGV
Basic specification	Model	W1000SL
	Rated load (kg)	1000KG
	Self weight (kg)	260(±10KG)
	Positioning accuracy (mm)	± 10mm
	Jacking height (mm)	60mm
	Dimension (L * w * h) mm	1280 * 800 * 420mm (excluding anti-collision strip)
	Navigation mode	Laser slam navigation
moving performance	Driving mode	Servo motor / two wheel differential drive
	control mode	Manual / automatic
	Form of motion	Horizontal linear motion
	No-load Operating speed	1.7m/s
	Full-load Operating speed	0.8m/s
	Jacking time	< 10s
	Orientation accuracy	±0.5°
	Acceleration time (no load)	3S
	Acceleration time (full load)	5S
	Body rotation speed (90 degrees)	< 1.5s
Body rotation speed (180 degrees)	< 3/s	
Battery performance	Driving voltage (V)	DC48V
	Battery capacity	40AH
	Battery type	Lithium iron phosphate
	Battery life	1500 cycles, capacity ≥ 80%



	Endurance time	More than 8h
	Charging time	≤1.5h
	Charging mode (optional)	Off line charging / automatic charging
safety protection	Anti collision mode	Lidar obstacle avoidance
		Ultrasonic obstacle avoidance / infrared obstacle avoidance
		Front and rear crash strips to avoid obstacles
	Emergency stop	Front and rear emergency stop buttons

Use and precaution

1. Use Wellwit special charging system for charging
2. Avoid the operation of non relevant personnel and close to the work area
3. In case of abnormal noise / vibration / abnormal response, immediately stop using and notify Wellwit for repair
4. The charging system shall be stored and used in a dry / ventilated / dust-free environment, and be moisture-proof and waterproof



深圳市井智高科机器人有限公司
Shenzhen Wellwit Robotics Co.,Ltd.

Application scenario



Address: 2F, building D, shengjianli Industrial Park, Dafu community,
Guanlan street, Longhua District, Shenzhen,GuangDong,China.





深圳市井智高科机器人有限公司
Shenzhen Wellwit Robotics Co.,Ltd.

Tel: 0755-8529-0005

Email: sales@wellwit.com.cn

Website: www.wellwit.com.cn