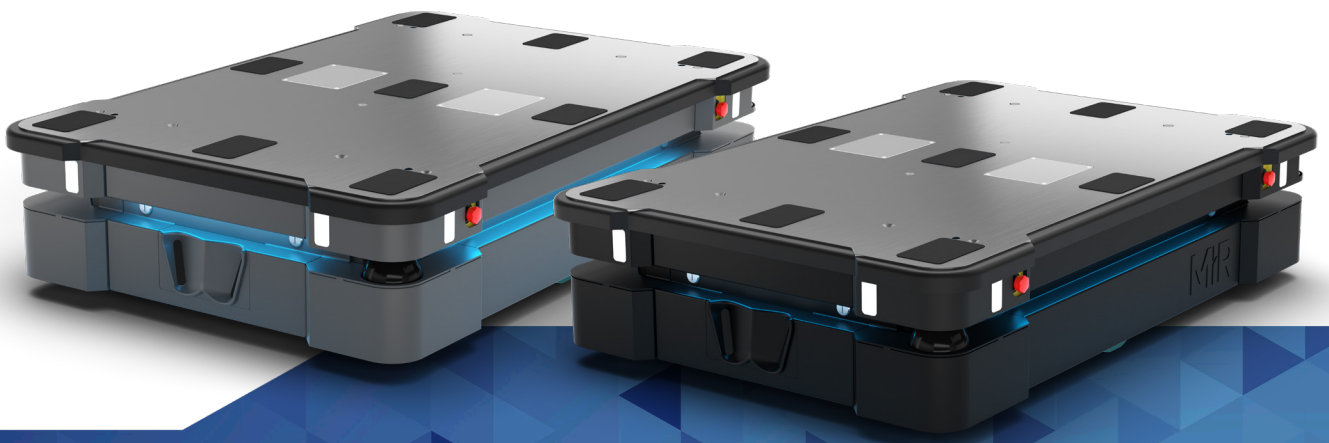


# MiR600 & MiR1350

Stronger. Safer. Superior.



MiR

# MiR600 & MiR1350

## Maximize efficiency of your internal logistics

The **MiR600 & MiR1350** set new standards for internal logistics with stronger and safer autonomous mobile robots (AMRs).

Pick-up, transport and deliver pallets or other heavy loads automatically and efficiently with the heavy-duty robots.

The robots are designed to comply with the highest available safety standards making them superior to other AMRs on the market.

With increased ability to withstand dust particles and fluids, the **MiR600 & MiR1350** are industrial, safer, and more reliable than any other AMRs, and they can be used in more environments.



MiR600 with EU Pallet Lift 600

### Advantages

- High payload enabling transportation of pallets and heavy goods
- Robust design ensuring long lifetime and easy serviceability
- Flexible and safe alternative to forklifts and trucks
- Designed to comply with present safety standards
- IP52 rated- improved ability to withstand dust and fluids

### TECH SPECS

	MiR600	MiR1350
Payload	600 kg / 1322 lbs	1350 kg / 2976 lbs
Max speed	2,0 m/s	1,2 m/s
Battery run time with max. payload	8,33 hours	6,75 hours
Battery run time without payload	10,75 hours	14,5 hours
Size in mm (L x W x H)	1350 x 910 x 320	1350 x 910 x 320



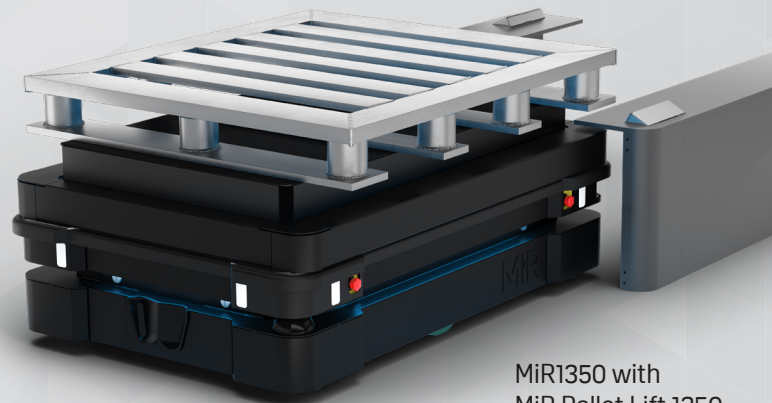
## MiR Top Modules

### Automate your transportation of heavy loads and pallets

You can easily deploy top modules on the **MiR600 & MiR1350** and MiR offers several out-of-box solutions for fast integration and scalability.

The MiR EU Pallet lift and the MiR Pallet Lift enable the robots to autonomously pick up and deliver pallets of different sizes, while the MiR Shelf Lift allows the robots to pick up, transport and deliver shelves with heavy loads.

Visit our webpage to learn more about the **MiR600 & MiR1350** at: [www.mir-robots.com](http://www.mir-robots.com)



MiR1350 with MiR Pallet Lift 1350

\*Minor exceptions to ISO3691-4 are identified and handled via MiRs Safety & Compliance documentation