

# GuardCom System

ROEQ GuardCom system basic functionality is to transfer your goods between your ROEQ top rollers and any stationary conveyor stations without unstable Wi-Fi connections. The communication between GuardCom and the AMR is wireless and based on proven, robust sensor technology. It enables safe, secure, reliable and cost-effective handling and transfer of goods between AMRs and conveyor stations

## Robot compatibility



MiR100



MiR200



MiR250



MiR500



MiR1000

## ROEQ product compatibility



TR125 Manual



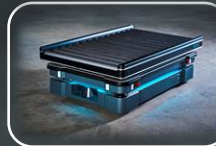
TR125 Auto



TR125 Manual 250



TR125 Auto 250



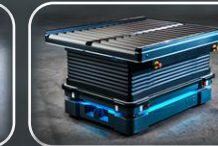
TR500



TR500 Auto



TR1000



TR1000 Auto

