



LIGHT MANUAL TOOL CHANGER GET EASY AND FAST CONVERSION

OPTIMIZE AND IMPROVE CONVERSION IN PRODUCTION WITH MANUAL TOOL CHANGER CLUTCH WHERE DEPLOYMENT AND REDEPLOYMENT OF TOOLS IS EASY AND SIMPLE.

FAST AND EASY CONVERSION

Before start of a new production run, tool changing is necessary and by using manual tool changer clutch, equipment idle time between the different work tasks is minimized and the production efficiency is improved.

With the light manual tool changer clutch, it is easy and fast to change tools. It is perfect for situations where tool changing occurs only a few times per week, and there also is no need for pneumatic or electrical connection.

HIGH COMPATIBILITY

High compatibility on almost all light-weight and collaborative robots and tools.

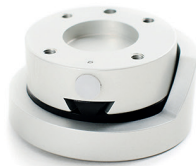
The product features a unique, patented design and a functionality that secures high strength, speed, and precision for each and any tasks in all applications.

MECHANICAL TOOL CHANGER

Light manual tool changer is only for mechanical tools without pneumatic and electric connection.

A wide range of modular and upgradeable manual and automatic tool changer clutches enabling mechanical, pneumatic, and electrical connection is in the assortment if needed.

All products are produced, inspected and tested at our factory in Norway.



THE BENEFITS OF THE SMARTSHIFT TOOL CHANGING SYSTEM



Universal compatibility for lightweight and collaborative robots



Easy to connect and no programming skills required



Perform high speed tasks with accurate precision



Lightweight components that maximize use of a robot

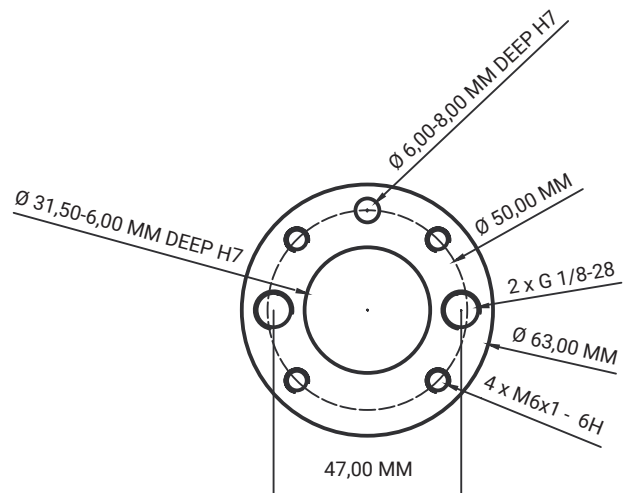
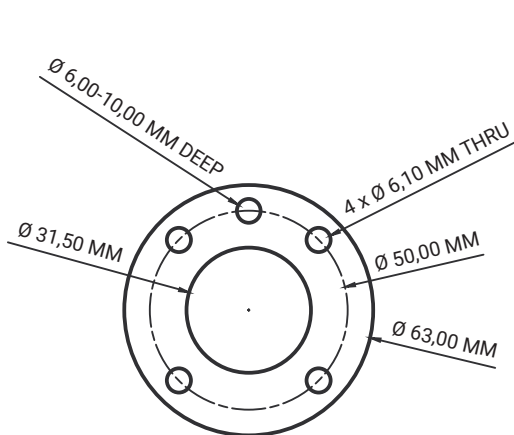


Cost effective solution

LIGHT MANUAL TOOL CHANGER

SPECIFICATIONS

	ROBOTMASTER	TOOLHOLDER
Handling payload up to:	20 kg / 705.5 oz	20 kg / 705.5 oz
Outer diameter:	63 mm / 3.11 in	63 mm / 2.48 in
Flange diameter:	31,5 mm h7 / 1.24 in h7	31,5 mm h7 / 1.24 in h7
Reference diameter:	50 mm / 1.96 in	50 mm / 1.96 in
Total weight:	180 g / 6.35 oz	120 g / 4.23 oz
Material:	Pom-C, Aluminium 6082-T6 anodized	Aluminium 6082-T6 anodized



HOW TO?

Fasten the robot master to the robot arm and configure the tool holder to the tool and the robot is ready to operate.

SMARTSHIFT tool changer system is profitable for every industry and application, regardless of size and type.

See all products at www.smartshift-robotics.com

