

# CNC LATHE AUTOMATION SYSTEM

The VersaBuilt CNC Lathe Automation System for Universal Robots makes high-mix automation easy and flexible. Combined with a UR10e robot from Universal Robots, the VersaBuilt CNC Lathe Automation System has everything needed to successfully automate a CNC Lathe. All components of the system are pre-assembled and designed to work together. Starting with basic hand tools, the VersaBuilt CNC Lathe Automation System can be installed and processing parts in a day.

V E R S A **B** U I L T  
R O B O T I C S



## NO PROGRAMMING REQUIRED

The VersaBuilt System Controller (VSC) is easy-to-use software designed from the ground-up for automating CNC lathes. All robot motion is pre-programmed allowing deployment in hours instead of weeks. Simply enter part dimension information into the VSC and enjoy the benefits of CNC automation without the tedious programming.

## DUAL-HEADED GRIPPER

A Dual-Headed Gripper increases processing efficiency by allowing the robot to unload a completed part and load the next part in a single motion inside the lathe. The VersaBuilt Dual-Headed Gripper can process almost any part shape by allowing each gripper to utilize part-specific custom fixtures.

### VersaCart 1300

Portable cart optimized for the UR10e robot

### Visual Infeed System

Part alignment grid improves operator efficiency and maximizes infeed capacity over a wide range of part sizes

### Dual-Headed Gripper

Dedicated grippers for raw material and completed part increase processing efficiency and supports widest range of part shapes

### VersaBuilt System Controller (VSC)

CNC automation control system provides rich graphical user interface and coordinates all CNC, robot, and IO functions eliminating the need for tedious robot programming

### Optional VersaDoor

Simple and reliable automatic door opener for CNC available for single or double doors

V E R S A **B** U I L T  
R O B O T I C S

Contact us for more details  
[sales@versabuilt.com](mailto:sales@versabuilt.com)  
(208) 906-0814

## INTRODUCTORY PRICING

Lathe Automation System with UR10e \$74,995  
Lathe Automation System Standalone \$24,995

# CNC LATHE AUTOMATION SYSTEM

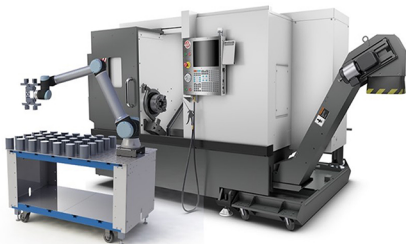
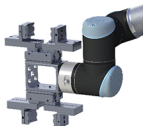
## Included with CNC Lathe Automation System

- VersaCart 1300
- VersaBuilt System Controller (VSC)
- Dual-Headed Gripper
- Cycle Start and Chuck Actuation control



VersaCart 1300

## Dual-Headed Gripper



## Technical Specifications

### Electrical Power

- Robot and controller = 110 VAC
- VersaBuilt System Controller = 110 VAC
- Ethernet Switch = 110 VAC

### Pneumatic

- 90-120 psi air conditioned to meet ISO 8573-1:2010 [7:4:4]

### VersaCart 1300

- 56" L x 32" W x 32" H
- Moveabl VersaCart via casters
- Lock in-position by lowering footpads
- Parts located on visual infeed
- Part Capacity Chart (puck)
  - 1" Diameter = 176 pieces
  - 2" Diameter = 88 pieces
  - 3" Diameter = 55 pieces
  - 4" Diameter = 35 pieces
  - 5" Diameter = 28 pieces
  - 6" Diameter = 20 pieces

### VersaBuilt System Controller (VSC)

- Tablet or laptop (not included) enables users to configure, test, and run jobs
- VSC manages communication with CNC controller and robot controller
- Digital I/O and pneumatic outputs

### Dual-Headed Gripper

- Pneumatic operation, 120 psi Max
- Clamping force at 120 psi = 50 lbs
- Clamps pipes or pucks

V E R S A **B U I L T**  
R O B O T I C S